



CASUISTIC PAPER

Michał Osuchowski¹(ABCGF), Dorota Bartusik-Aebisher²(DFG), Ewa Kaznowska¹(DFG),
David Aebisher³(DFG)

Hyalinising clear cell carcinoma of salivary gland: a case report

¹ Department of Pathomorphology, Medical College of Rzeszów University, Rzeszów, Poland

² Department of Biochemistry and General Chemistry, Medical College of Rzeszów University, Rzeszów, Poland

³ Department of Photomedicine and Physical Chemistry, Medical College of Rzeszów University, Poland

ABSTRACT

Introduction. Clear cell carcinoma, not otherwise specified/hyalinising clear cell carcinoma of the salivary gland (HCCC) is a malignancy that arises in minor salivary glands. It rarely leads to distant metastases or cancer-related death but has the potential for recurrence and focal metastases.

Aim. A case is reported.

Description of the case. A 72 years old female patient has reported to the Clinic of Otolaryngology with a tongue lesion. The patient had no history of malignancy. The lymph node has been surgically removed for further examination. Cords and nests of clear cells and cells with eosinophilic cytoplasm in a hyalinized stroma were identified within the lymph node. After the diagnosis the patient has been transferred to another Oncology Hospital for further treatment.

Conclusion. The diagnosis of clear cell carcinoma may be challenging because many of its features frequently overlap with other salivary gland lesions.

Keywords. cancer, hyalinising clear cell carcinoma, salivary gland

Introduction

The original description of hyalinizing clear cell carcinoma (HCCC) was published by Milchgrub et al. in 1994.¹⁻³ HCCC shows a female predominance.⁴ The majority of cases occur in the oral cavity, most commonly the tongue and hard palate. Less common locations include the parotid gland, lacrimal gland, nasopharynx and hypopharynx.⁵

Aim

A case of hyalinizing clear cell carcinoma is reported.

Description of the case

A 72 years old female patient has reported to the Clinic of Otolaryngology with a tongue lesion. Upon examination by the admitting doctor a tumor of the base of the tongue has been identified and a surgical biopsy has

Corresponding author: Michał Osuchowski, e-mail: michal126@interia.pl

Participation of co-authors: A – Author of the concept and objectives of paper; B – collection of data; C – implementation of research; D – elaborate, analysis and interpretation of data; E – statistical analysis; F – preparation of a manuscript; G – working out the literature; H – obtaining funds

Received: 23.03.2020 | Accepted: 13.05.2020

Publication date: June 2020

been performed. The examination also revealed an enlarged lymph node in the submandibular region, posterior to the submandibular gland.

Our Department of Pathology received two 5 mm fragments of the tongue tumor. When examined under the microscope tissue sample consisted of nests of cells with little nuclear atypia and clear cytoplasm alongside abundant chronic inflammation (Figure 1). Immunohistochemical stains revealed these tumor cells to be positive for CK 5/6, CK7 (Figure 2), CK19, and focally positive for RCC marker. Stains for CK20 and S-100 Protein were negative. Even though network of small, thin walled, „chicken wire“ vasculature has not been identified a Renal Cell Carcinoma metastases were taken under consideration.

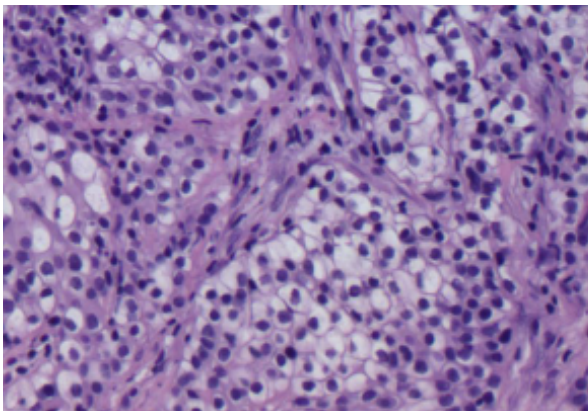


Fig. 1. Nest of neoplastic cells with little nuclear atypia and clear cytoplasm (200x, H&E stain)

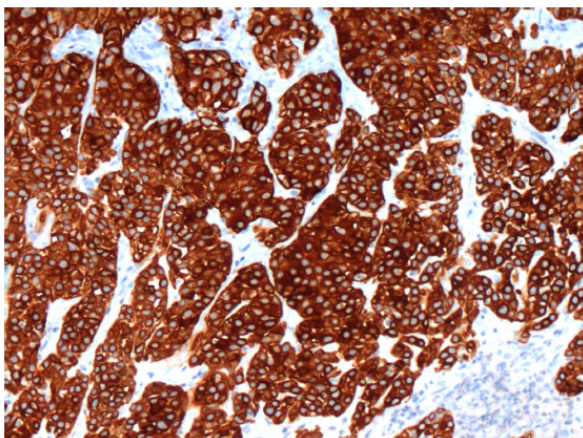


Fig. 2. Positive stain for CK7 (200x)

Renal cell carcinoma (RCC) is a kidney cancer that originates from the cells that line the proximal convoluted tubule.⁶⁻²⁸ It accounts for about 2–3% of all malignant tumors.⁷⁻¹⁰ Most cases are diagnosed in the 7th decade of life.⁸ Metastases to the head and neck region account for 3.3% of cases.⁹⁻²² They may occur many years after surgical treatment of the primary tumor.¹⁰⁻³⁴

The patient had no history of malignancy. She underwent an abdominal CT scan which excluded kidney

tumors. At the same time a fine needle aspiration (FNA) has been performed on the enlarged lymph node but the cytological examination was nondiagnostic.^{35,36}

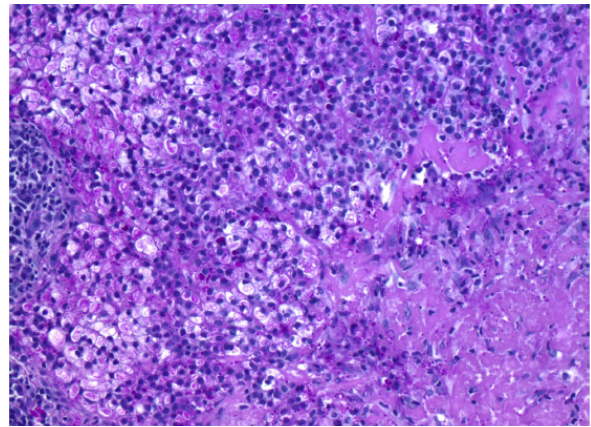


Fig. 3. Nests of clear cells and cells with eosinophilic cytoplasm in a hyalinized stroma (200x, H&E stain)

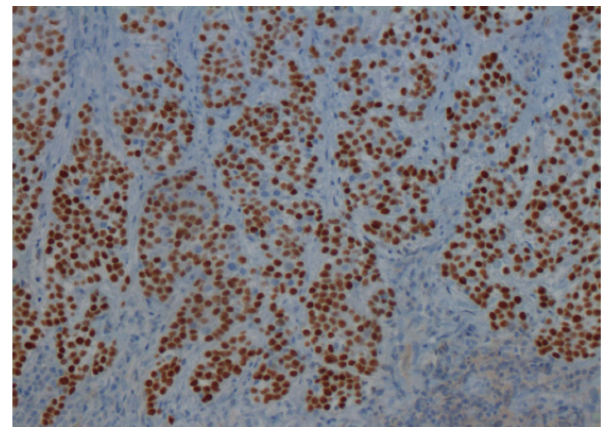


Fig. 4. Positive stain for p63 (200x)

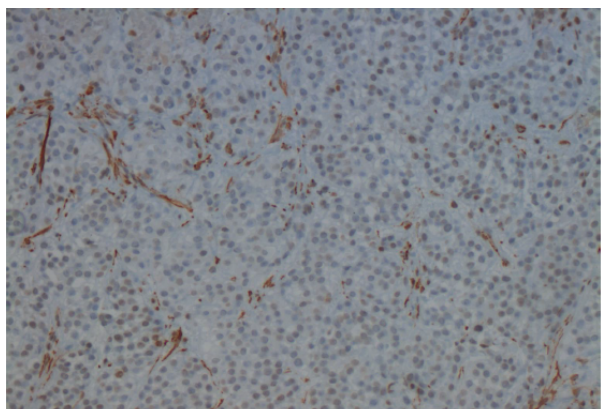


Fig. 5. Negative stain for SMA (200x)

The lymph node has been surgically removed for further examination. Cords and nests of clear cells and cells with eosinophilic cytoplasm in a hyalinized stroma were identified within the lymph node (Figure 3). Immunohistochemical stains were positive for p63 (Figure 4), Epithelial Membrane Antigen (EMA) and negative for Smooth Muscle Actin (SMA) (Figure 5), Melan A, HMB45, De-

smin, PAX8, CD30, Uroplakin, Estrogen Receptor (ER), GCDFP-15, Inhibin, WT1 and Vimentin. Tumor cells were also PAS positive and Mucin negative.

Discussion

When diagnosing HCCC, one must exclude other, more frequent lesions of the oral cavity. Metastatic Clear Cell Renal Cell Carcinoma was taken under consideration at the beginning of the differential diagnosis. The sample that was first examined was small and lacked hyalinising stroma. However, metastatic tumor cells from the lymph node were positive for p63 and negative for CD10 and therefore CCRCC was excluded.¹¹

Primary oral cavity lesions that present squamous differentiation are squamous cell carcinoma (SCC) with clear cell differentiation and mucoepidermoid carcinoma. SCC presents greater nuclear atypia than HCCC and has a high mitotic activity.¹² Mucoepidermoid carcinoma has a high tendency for cyst formation lined by goblet type mucinous cells and generally lacks sclerosis/hyalinization and small nests or thin cords of tumor.¹³ Tumor mimics with myoepithelial differentiation, in particular epithelial-myoepithelial carcinoma usually show expression of markers such as SMA or S-100 Protein which were negative in presented case.¹⁴ Finally, clear cell odontogenic carcinoma was considered a less likely diagnosis due to localization of the tumor.¹⁵ After the diagnosis the patient has been transferred to another Oncology Hospital for further treatment.

Conclusion

The diagnosis of Hyalinizing clear cell carcinoma of the salivary gland may be difficult, especially when the examined tissue sample is small and doesn't include all of the components of the tumor. Immunohistochemical stains may be very helpful in such difficult cases. In addition a EWSR1-ATF1 gene fusion seen in fluorescence in situ hybridization (FISH) confirm the diagnosis.

References

1. Baghirath PV, Kumar JV, Vinay BH. Hyalinizing clear cell carcinoma: A rare entity. *J Oral Maxillofac Pathol.* 2011;15(3):335-339.
2. Antonescu CR, Katabi N, Zhang L. EWSR1-ATF1 fusion is a novel and consistent finding in hyalinizing clear-cell carcinoma of salivary gland. *Gen Chrom Cancer.* 2011;50:559-570.
3. Milchgrub S, Gnepp DR, Vuitch F, Delgado R, Albores-Saavedra J. Hyalinizing clear cell carcinoma of salivary gland. *Am J Surg Pathol.* 1994;18:74-82.
4. O'Sullivan-Mejia ED, Massey HD, Faquin WC, Powers CN. Hyalinizing clear cell carcinoma: report of eight cases and review of literature. *Head Neck Pathol.* 2009;3:179-185.
5. Weinreb I. Hyalinizing clear cell carcinoma of salivary gland: a review and update. *Head Neck Pathol.* 2013;7 Suppl 1:S20-29.
6. Curti BD. Renal cell carcinoma. *J Amer Med Assoc.* 2004; 292(1):97-100.
7. Powles T, Albiges L, Staehler M, et al. Updated European Association of Urology Guidelines recommendations for the treatment of first-line metastatic clear cell renal cancer. *Eur Urol.* 2018;73(3):311-315.
8. Cohen HT, McGovern FJ. Renal-cell carcinoma. *N Engl J Med.* 2005;353(23):2477-2490.
9. Lieder A, Guenzel T, Lebentrau S, Schneider C, Franzen A. Diagnostic relevance of metastatic renal cell carcinoma in the head and neck: An evaluation of 22 cases in 671 patients. *Int Braz J Urol.* 2017;43(2):202-208.
10. Wang C, Takeda K, Shiba M, Takayama H, Munakata S. Metastasis to the Tongue from Renal Cell Carcinoma 10 Years after Nephrectomy: A Case Report. *Hinyokika Kyo.* 2016;62(8):407-410.
11. McHugh JB, Hoschar AP, Dvorakova M, Parwani AV, Barnes EL, Seethala RR. p63 immunohistochemistry differentiates salivary gland oncocytoma and oncocytic carcinoma from metastatic renal cell carcinoma. *Head Neck Pathol.* 2007;1(2):123-131.
12. Ng JH, Iyer NG, Tan M-H, Edgren G. Changing epidemiology of oral squamous cell carcinoma of the tongue: A global study. *Head Neck.* 2017;39(2):297-304.
13. Donohue-Cornejo A, Paes de Almeida O, Sánchez-Romero C, Espinosa-Cristóbal LF, Reyes-López SY, Cuevas-González JC. Hyalinizing clear cell carcinoma-a rare entity in the oral cavity: A case report. *World J Clin Cases.* 2020;8(1):133-139.
14. Hornick JL, Fletcher CD. Myoepithelial tumors of soft tissue: a clinicopathologic and immunohistochemical study of 101 cases with evaluation of prognostic parameters. *Am J Surg Pathol.* 2003;27:1183-1196.
15. Krishnamurthy A, Ramshankar V, Majhi U. Clear cell odontogenic carcinoma of the mandible and temporomandibular joint with cervical lymph nodal metastasis. *Natl J Maxillofac Surg.* 2014;5(2):221-223.
16. Orning JL, Trembath DG, Zanation AM. Endoscopic endonasal approach for resection of infundibular granular cell tumor: Case Report and Literature Review. *J Case Rep Med.* 2013;2:235775.
17. Saleh KA, Nurishmah MI, Firouzeh GN, Goh BS. Primary clear cell carcinoma of minor salivary gland of the soft palate: a case report. *Med J Malaysia.* 2012;67(3): 335-336.
18. Baghirath PV, Kumar JV, Vinay BH. Hyalinizing clear cell carcinoma: A rare entity. *J Oral Maxillofac Pathol.* 2011;15(3):335-339.
19. Masilamani S, Rao S, Chirakkal P, Kumar AR. Hyalinizing clear cell carcinoma of the base of tongue: a distinct and rare entity. *Indian J Pathol Microbiol.* 2011;54(1):167-169.
20. Jeffus SK, Gardner JM, Steliga MA, Shah AA, Stelow EB, Arnaoutakis K. Hyalinizing clear cell carcinoma of the lung: Case report and review of the literature. *Am J Clin Pathol.* 2017;148(1):73-80.

21. Salgia NJ, Dara Y, Bergerot P, Salgia M, Pal SK. The changing landscape of management of metastatic renal cell carcinoma: current treatment options and future directions. *Curr Treat Options Oncol*. 2019;20(5):41-45.
22. Reinhorn D, Sarfaty M, Leshno M, et al. A Cost-Effectiveness analysis of nivolumab and ipilimumab versus sunitinib in first-line intermediate- to poor-risk advanced renal cell carcinoma. *Oncologist*. 2019;24(3):366-371.
23. Oliver J, Wu P, Chang C, Roden D, Wang B, Liu C, Hu K, Schreiber D, Givi B. Patterns of care and outcome of clear cell carcinoma of the head and neck. *Otolaryngol Head Neck Surg*. 2019;161(1):98-104.
24. Icard B, Grider DJ, Aziz S, Rubio E. Primary tracheal hyalinizing clear cell carcinoma. *Lung Cancer*. 2018;125:100-102.
25. Takamatsu M, Sato Y, Muto M, et al. Hyalinizing clear cell carcinoma of the bronchial glands: presentation of three cases and pathological comparisons with salivary gland counterparts and bronchial mucoepidermoid carcinomas. *Mod Pathol*. 2018;31(6):923-933.
26. Skálová A, Stenman G, Simpson RHW, et al. The Role of Molecular Testing in the Differential Diagnosis of Salivary Gland Carcinomas. *Am J Surg Pathol*. 2018 ;42(2):e11-e27.
27. Jeffus SK, Gardner JM, Steliga MA, Shah AA, Stelow EB, Arnaoutakis K. Hyalinizing clear cell carcinoma of the lung: Case report and review of the literature. *Am J Clin Pathol*. 2017;148(1):73-80.
28. Burgess B, Ananthanarayanan V, Charous S. Hyalinizing Clear Cell Carcinoma of the Tonsil: A Case Report. *Head Neck Pathol*. 2017;11(4):580-583.
29. Lan J, Huang SC, Chen YH, Chen WC, Jin YT, Lu YC, Chien CY, Huang HY. Primary paranasal sinus clear cell carcinoma with EWSR1-ATF1 fusion: report of 2 molecularly confirmed cases exhibiting unique histopathology. *Hum Pathol*. 2017;63:139-143.
30. Skálová A, Šteiner P, Vaneček T. New developments in molecular diagnostics of carcinomas of the salivary glands: “translocation carcinomas“. *Cesk Pathol*. 2016;52(3):139-145.
31. Ni H, Wang XT, Xia QY, Wang X, Li R, Yang WR, Wei X, Gong X, Zhou XJ, Rao Q. Zhonghua Bing Li Xue Za Zhi. Hyalinizing clear cell carcinoma of salivary gland: a clinicopathologic study. *Head Neck Pathol*. 2016;45(8):577-578.
32. Falk N, Weissferdt A, Kalhor N, Moran CA. Primary Pulmonary Salivary Gland-type Tumors: A Review and Update. *Adv Anat Pathol*. 2016;23(1):13-23.
33. Lin JC, Liao JB, Fu HT, Chang TS, Wang JS. Salivary gland hyalinizing clear cell carcinoma. *J Pathol Transl Med*. 2015;49(4):351-353.
34. Fukuda A, Tagami Y, Takasawa A, et al. Nasopharyngeal hyalinizing clear cell carcinoma with EWSR1 rearrangements diagnosed by fluorescence in situ hybridization. *Auris Nasus Larynx*. 2015;42(5):412-415.
35. Skálová A, Weinreb I, Hyrcza M, et al. Clear cell myoepithelial carcinoma of salivary glands showing EWSR1 rearrangement: molecular analysis of 94 salivary gland carcinomas with prominent clear cell component. *Am J Surg Pathol*. 2015;39(3):338-348.
36. García JJ, Jin L, Jackson SB, Larsen BT, Lewis JE, Sukov WR, Roden AC. Primary pulmonary hyalinizing clear cell carcinoma of bronchial submucosal gland origin. *Hum Pathol*. 2015;46(3):471-475.